



unFY Control Panel

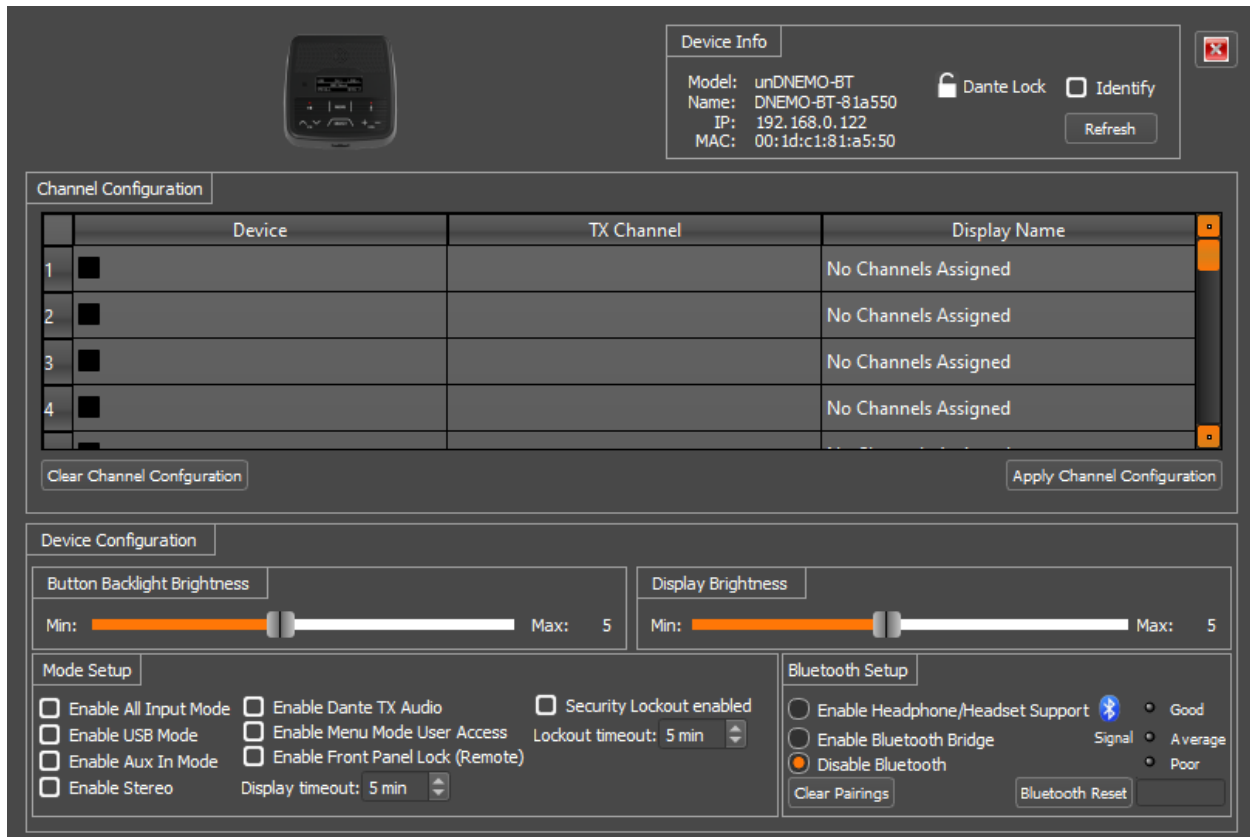
unDNEMO-BT Configuration



QSC, LLC • 1675 MacArthur Boulevard • Costa Mesa, CA 92626
Ph: 800/854-4079 or 714/957-7100 • Fax: 714/754-6174

© 2020 QSC, LLC all rights reserved. QSC and the QSC logo are registered trademarks of QSC, LLC in the U.S. Patent and Trademark office and other countries. All other trademarks are the property of their respective owners. Patents may apply or be pending.

www.qsc.com



The configuration software for the unDNEMO-BT is organized into the following key sections:

- Channel Configuration
- Device Configuration

Mono Channel Configuration

***NOTE:** The channel configuration/assignment noted below only works for Dante channels. It cannot be used for AES67 channels. AES67 channels are not user selected from the devices front panel like the Dante channels and can only be assigned statically using Dante Controller.

The unDNEMO-BT requires the installer or end user to first select the desired Dante™ audio channels for monitoring on the active Dante™ network. This task is easily performed using the Channel Configuration section of the software.

The channel list control is used to specify which Dante™ channel is assigned to each of the 64 available channel slots available on the unDNEMO.



The Channel Configuration list consists of three columns:

- Device Name
- Device TX Channel
- Display Name

The channel configuration can be done manually by entering the exact Dante™ device name (case sensitive) and channel name into the corresponding fields. However it is recommended to take advantage of the built in drag and drop functionality from the device list to assist in creating the customized channel list. This feature not only minimizes the configuration time needed to setup a device, but it also minimizes errors in assigning device and channel names by removing any chance for misspellings.

Any device that contains Dante™ transmit channels (denoted by a TX in the expanded channel view in the device list), can be assigned by either dragging a single channel label from the device list onto the desired channel list location or by dragging the name of the device in the channel list. If the device name is selected and dragged, then all available channel names will automatically be populated into the channel configuration list.

When channels are applied by the drag and drop feature, the display name is automatically copied over as the Dante™ channel name. If it's desirable for the end user to be presented with a name that differs from the Dante™ channel name on the network then the name may be overridden by entering the desired display name, up to 32 characters in length.

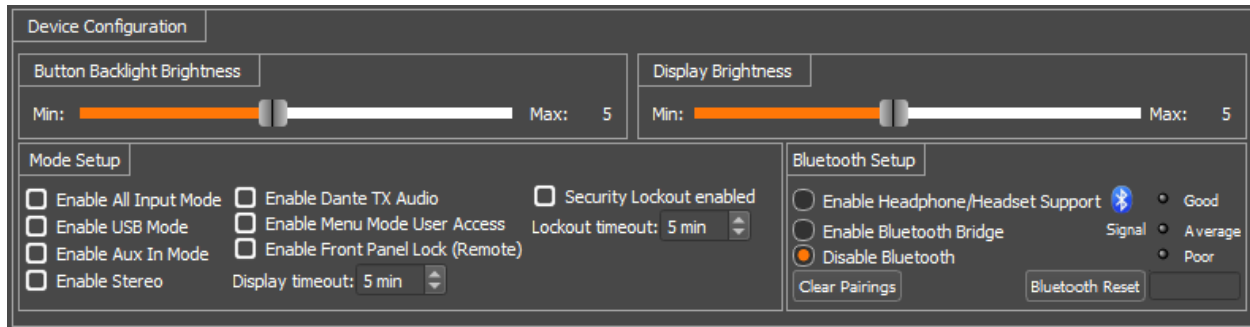
In addition to the channel names, each row of the channel list features an enable checkbox. In order for the channel to be enabled and included in the channel list, this checkbox must be checked. Any channels with the check box not checked will be ignored by the user interface of the unDNEMO-BT.

Once all channel configuration settings have been set up, click the "Apply Channel Configuration" button to send the settings to the unDNEMO-BT.

If you are setting up a large number of unDNEMO devices, it is recommended that you also save the configuration as a preset file. Once saved as a file, this preset can be applied to a multiple unDNEMO devices on the Dante™ network using the Multiple Device Preset Load functional located under the Tools menu.

Stereo Channel Configuration

In the Mode Setup controls, the user may select "Enable Stereo" to configure the unDNEMO in stereo monitoring mode. When this checkbox is selected, the channel list will be altered to show 32 channel pairs (1- L, 1-R, 2-L, 2-R, etc). The "Display name" field is taken from the name assign to the left hand channel while the right hand channel name is disabled. The same configuration method is used for stereo channel setup as is done for the mono channel monitoring. When the user cycles through the channel list, the audio is output to the corresponding left or right channel when monitoring with headphones. The internal speaker is a mono sum of the two channels.



Device Configuration

Button Backlight Brightness

The unDNEMO-BT features a backlit button keypad for added visibility in low visibility lighting conditions. The backlight brightness is adjustable from a scale of 1 (minimum) to 10 (maximum) using the slider controls.

Display Brightness

The unDNEMO-BT features a high visibility OLED display with adjustable brightness control. The brightness is adjustable from a scale of 1 (minimum) to 10 (maximum) using the slider controls.

Mode Setup

The Mode Setup configuration section allows the installer to customize the capabilities of the unDNEMO-BT for an optimized end user experience.

All Input Mode

The all input mode mixes input from the Dante™ network, USB audio input and line input sources simultaneously to provide an all in one audio management interfaces for applications requiring simultaneous monitoring from these multiple audio input sources.

USB Mode

The USB mode allows the unDNEMO-BT to operate as a USB sound card for bi-directional computer-based audio applications.

Aux In Mode

The aux in mode allows the unDNEMO-BT to operate as a local monitor for an audio device connected to the line input or via Bluetooth®. The aux source is selected by the user on the front panel in the Aux source screen.



Stereo

The “Enable Stereo” function configures the unDNEMO-BT to treat all channels in the monitoring list as stereo pairs.

Dante™ TX Audio

The Dante™ TX audio functionality allows the unDNEMO-BT to bridge audio from the unDNEMO-BT to the Dante™ network as follows:

- Net Mode – Internal or External mic audio is transmit on unDNEMO-BT Dante™ transmit channel 1.
- USB Mode – Audio playback from the connected computer audio source is bridged to the Dante™ audio network on transmit channels 1 (Left) and 2 (right)
- Aux Mode – The analog input connected to the Line Input of the unDNEMO-BT is bridged to Dante™ audio network on transmit channels 1 and 2.
- All Input Mode – No TX audio supported.

The Dante™ TX audio functionality will be configured based upon the installer setup of this option.

Menu Mode User Access

The unDNEMO-BT features a menu mode for viewing information about the device and limited configuration of device features. The menu mode functionality will be configured based upon the installer setup of this option.

Enable Front Panel Lock (Remote)

This function is useful for applications that wish to restrict the end user from access to all front panel functions except for volume and mute controls. This functionality is suitable for applications that are managed by a 3rd party control system via the unDNEMO-BT 3rd party network control protocol.

Display Timeout

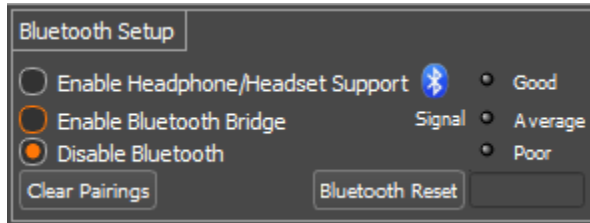
The screen on the unDNEMO-BT will suffer burn in if left displaying the same text for long periods so there is a programmable time period after which the screen will turn itself off. By default, the timeout is set to 5 minutes but this can be adjusted from 1 minute to 60 minutes.

**Note: For all controls in the Device Configuration section, changes made in the software will be immediately reflected on the device.*

Security Lockout Enabled

This feature locks the device from user input once the lockout timer has exceeded the set lockout time. Pressing the channel up button “A” and volume up “+” buttons simultaneously for 3 seconds unlocks the device. Pressing additional buttons on the device refreshes the lockout time to the full set, lockout time.

Bluetooth® Setup



The Bluetooth® features of the unDNEMO-BT can be configured by the installer in the following modes.

- Headphone/Headset – Enables headphone or headset wireless monitoring functionality.
- Bluetooth® Bridge – Transmits received Bluetooth® audio via Dante™ outputs
- Disable Bluetooth® – Disables all Bluetooth® functionality from the unit.

Signal

This is a reporting status that gives the Bluetooth® signal strength which the unD6IO-BT is receiving from the device which it is connected. The status is reporting live when the plug-in is open and has a Bluetooth® connection; reporting “Good”, “Average”, and “poor”.

Clear Pairings

This function clears the pairing list of the unDNEMO-BT. This function may be useful if a user is having difficulty pairing to the device.

Bluetooth® Reset

This function will reset the Bluetooth® interface in the event an errant Bluetooth® device is paired that causes a device failure in the pairing / connect process.