



“How’d they do that?”

ISE 2025
Q-SYS Experience Tour
Technology Deep Dive



Thank you for stopping by the Q-SYS stand at ISE 2025.
This year, we focus on how a singular platform can shape and
customize real-time experiences across high impact spaces and the
spaces in-between.



ISE 2025

Q-SYS Lobby

First impressions are important, and a great, immersive corporate lobby sets the tone for the visit ahead. Q-SYS provides a blank canvas to design the right experience for each unique space.

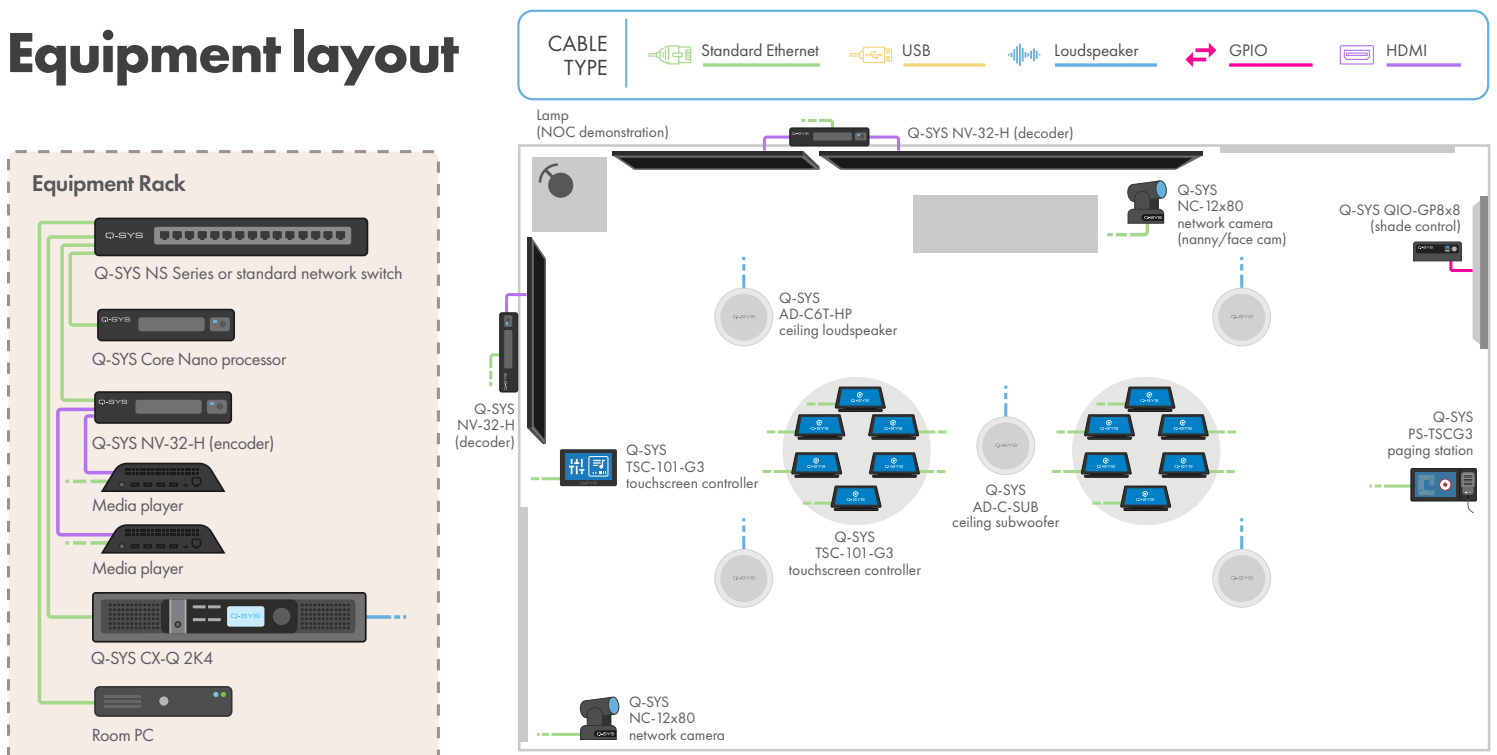
For starters, we demonstrate how Q-SYS controls multi-screen digital signage from Spinetix and synchronizes content to lighting changes.

Once the experience begins, participants use a custom-built check-in application to provide various contact information (including name, favorite color and language preference). We also use an open API connection to ElevenLabs for integrated AI-driven message assembly.

Most importantly, our lobby demonstrates how Q-SYS leverages data to unify guests' experiences across every touchpoint, in every space. For example, real-time vote collecting on language preference passes from the lobby to the all-hands room and is reflected in the transcription choice. We also demonstrate how a page recorded on the new PS-TSC page station gets stored and forwarded to the high-impact space.

Lastly, we demonstrate how an AV system uses sentiment gathering to shape moods and mindsets of guests in real time (see "Spaces In-between" room).

Equipment layout





ISE 2025 High-Impact All-hands/Classroom

Q-SYS VisionSuite leverages the power of AI to deliver more natural and engaging hybrid experiences in high-impact spaces. Simply walk into a space and let Q-SYS handle it from there.

High-Impact Space Features

Vision-driven Room Automation: Q-SYS VisionSuite leverages the robust Q-SYS control engine to enable intuitive ways to trigger experience-driving automations, including audio and visual prompts that can be triggered based on where a person is in a space. That automated experience is extended with vision-based control, allowing you, among other things, to start / end a presentation hands-free, simply by walking into the right place (or the wrong place in the unfortunate case of blocking the display, which trigger helpful (but bitter) instruction signage).

Q-SYS Control for UC Platforms: Call controls and room's AV controls are integrated on a single touchscreen for an intuitive meeting experience, including live camera controls, device power and more. VisionSuite is certified for Microsoft Teams Rooms and is supported by Google Meet.

BYOD Support: Q-SYS is compatible with any of the major UC platforms. Simply connect a laptop to any Q-SYS USB endpoint to bridge the room's audio and camera feed to the far end.

Intelligent audio-based camera switching: Q-SYS allows for as many network cameras as needed for a space and can be combined with the in-room microphones to automatically switch between user-defined camera presets and apply video analytics to frame the best shot, ensuring the far-end always sees the active talker. VisionSuite supports native Q-SYS network microphones, as well as deep integrations with several partner microphones.

Helpdesking Simplified: In addition to the room controls, participants can request help at the push of a button on the control interface. Q-SYS uses webhooks to alert support staff through their messaging platform when a button is pressed and with Q-SYS Reflect, support staff can try to remotely support the issue before sending a technician to the room.

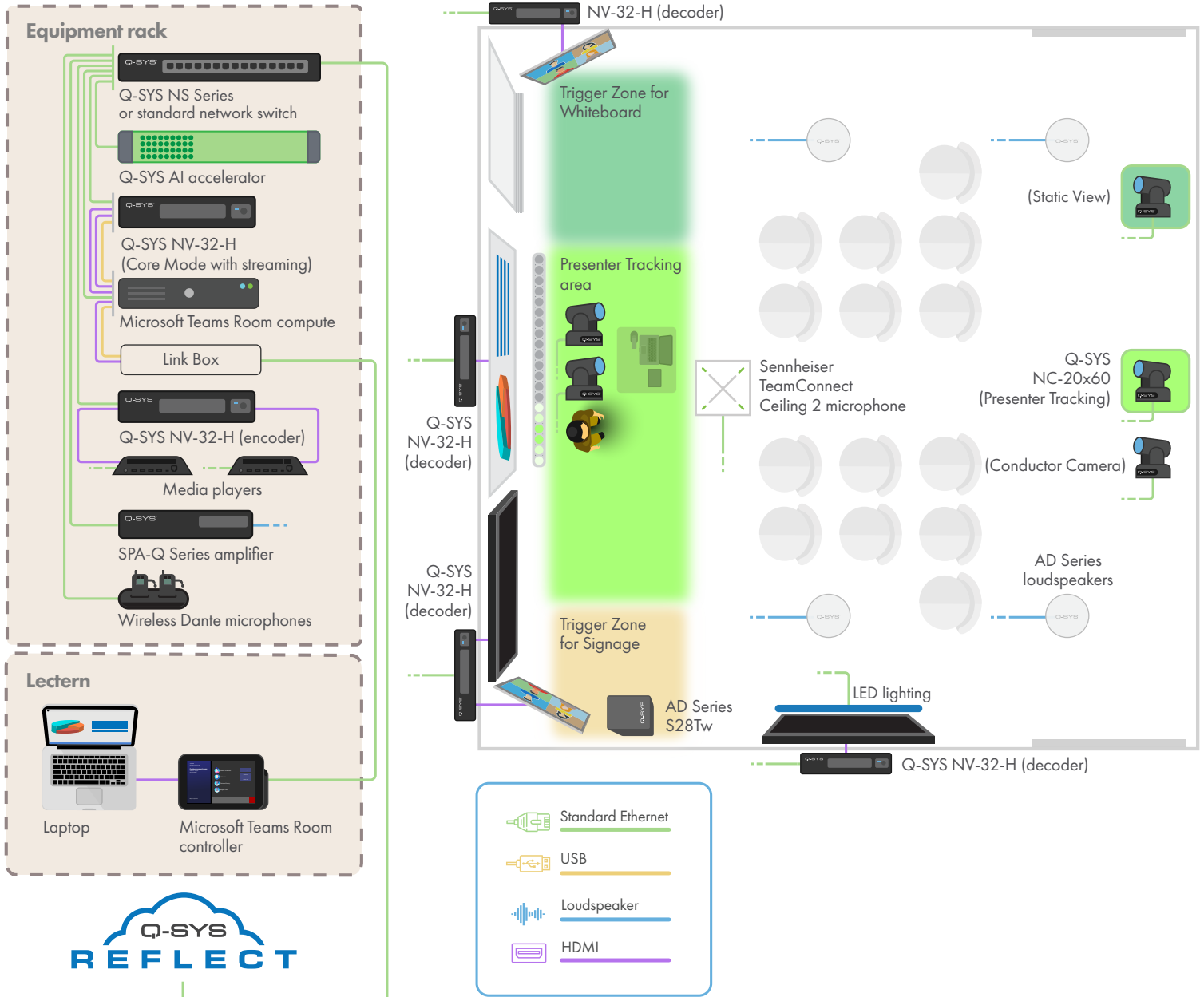
Full-body Presenter Tracking: Q-SYS VisionSuite has unique full-body tracking enhanced with a proprietary algorithm that predicts movements to ensure optimal framing at all times. This technology ensures the presenter is always kept in sight with smooth broadcast-quality pan and tilt movements.

Scene Analysis and System Configurability: As shown in our Graphical User Interface (GUI) up on a display, our Q-SYS VisionSuite tracking technology ensures that you can meet the needs of different presentation styles. This includes the ability to adjust to the presenter's body dimensions, adjust zone settings, and tune transition times.

Real-time Transcription/Translation: Based on the language preference chosen by your group in the lobby, Q-SYS connects to real-time third-party transcription and translation services for the high-impact space. This was made possible by leveraging the power of Q-SYS Open.

High-Impact All-hands/Classroom

Equipment layout





ISE 2025

Network Operations Center

Network Operations Center is the centralized hub for intelligent cloud and data collection via Q-SYS Reflect cloud-based remote monitoring and management.

The Experience

Q-SYS Reflect is an intrinsic part of the Q-SYS Platform making it easier than ever to make quick decisions and deliver confidence to your users with detailed, real-time system information for every connected device along with alerts and notifications that you can integrate into your daily workflow.

Q-SYS Reflect Plus expands on the standard Q-SYS Reflect monitoring capabilities to add optional enterprise-level remote system management and control capabilities.

Remote User Control Interface access: Allows you to quickly resolve issues with users in the room and configure your Q-SYS system from anywhere. We demonstrated how much time, and cost, you can save by correcting simple user error (a forgotten light!) without sending a technician onsite.

Remote Helpdesking: Of course, there are issues that may require 'boots on the ground'. When a presenter in the high-impact/classroom space commented on the temperature, our tech had the right information to solve the problem quickly with management and control capabilities.

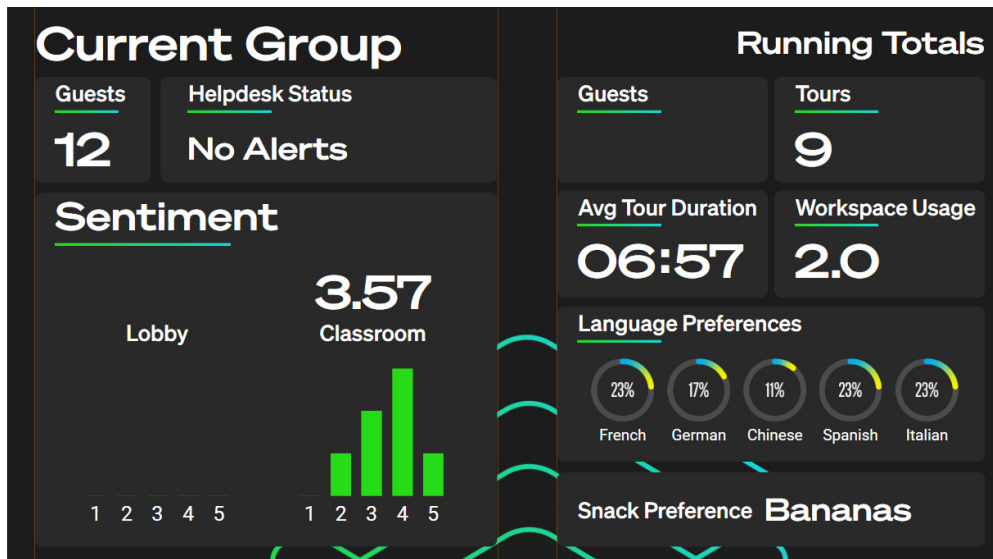
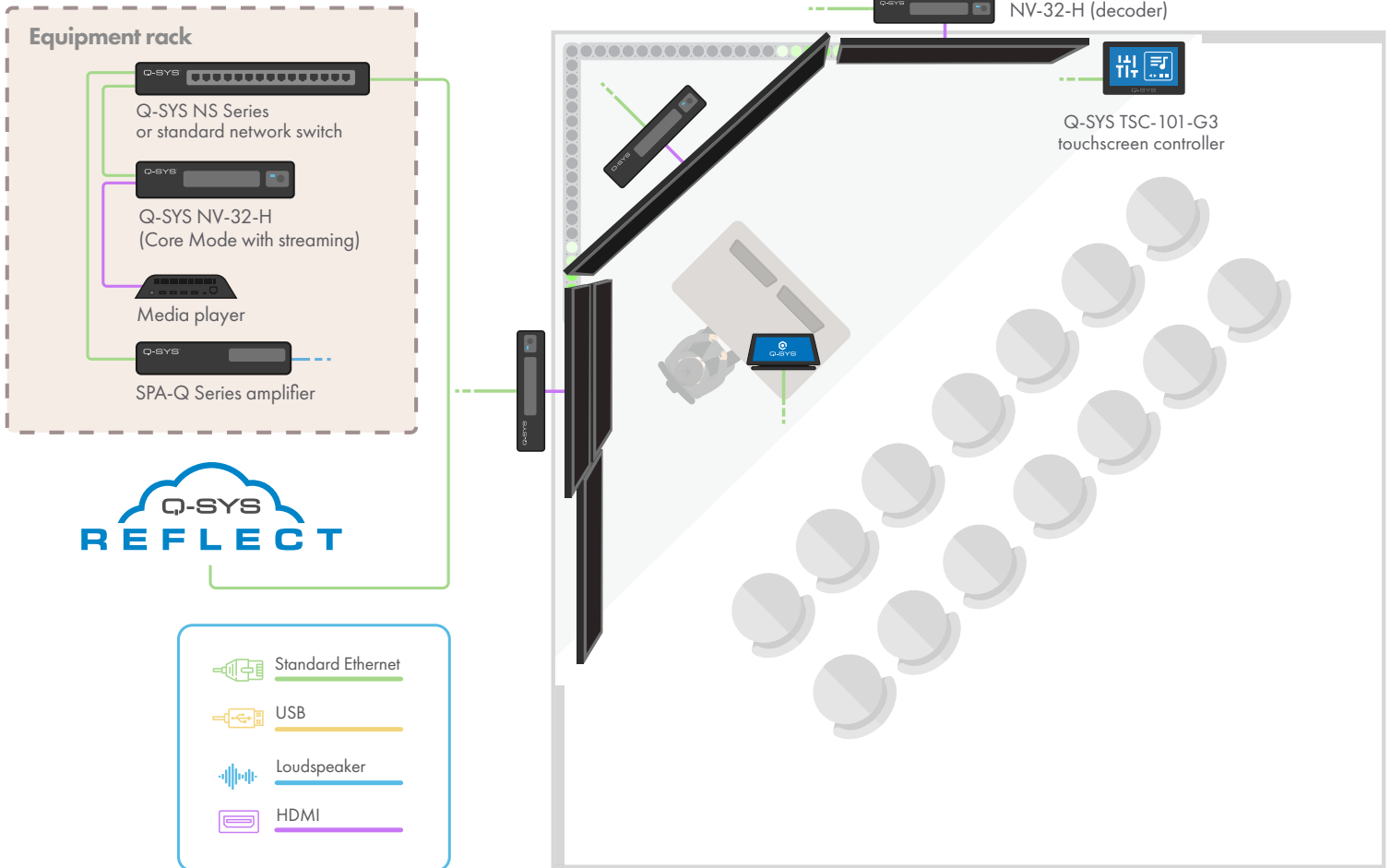
Leveraging data for better decision making: Q-SYS Reflect is the centralized hub for collecting data to help you make better decisions and we demonstrated that a few ways.

- **Space Usage:** Q-SYS NC Series cameras are able to provide room occupancy data to Reflect, so we have better insight into how (and when) spaces are being used so decision makers can ensure the that projected business outcomes are being met.
- **User Feedback:** You can leverage Q-SYS to gather quick feedback from users to have better insights on the topics of your choice. Whether it's sentiment (how would you rate the experience?) or experience customization (language preference), there are many possibilities with Q-SYS.

ISE 2025 Network Operations Center



Equipment layout



Custom data dashboard within Q-SYS Reflect



ISE 2025

The Spaces In-between

We explored how the Q-SYS Platform connects insight and emotion in some of the “in-between” experiences throughout a building or campus.

The Experience

Adaptive Lighting & Background Music: Using the time of day, Q-SYS can automate the lighting, temperature and brightness in a room. And that mood survey you filled out? The music you heard was automated based on the responses you provided to Q-SYS.

Creative Signage: From wayfinding, special events notification, corporate experience centers and more, Q-SYS integrates with Spinetix signage technology to elevate even the most ordinary areas. For this demo, a volunteer grabbed their snack of choice to automate customized responses, triggered by pressure sensors under each basket.

Broadcast Solutions: More corporate campuses are recognizing the importance of engaging their remote audience at an elevated level, so they’re installing in-house broadcast studios to host product launches, podcast shows and more. One participant was invited to an impromptu podcast, which was fully automated by Q-SYS, without the need for additional staff to manage it.

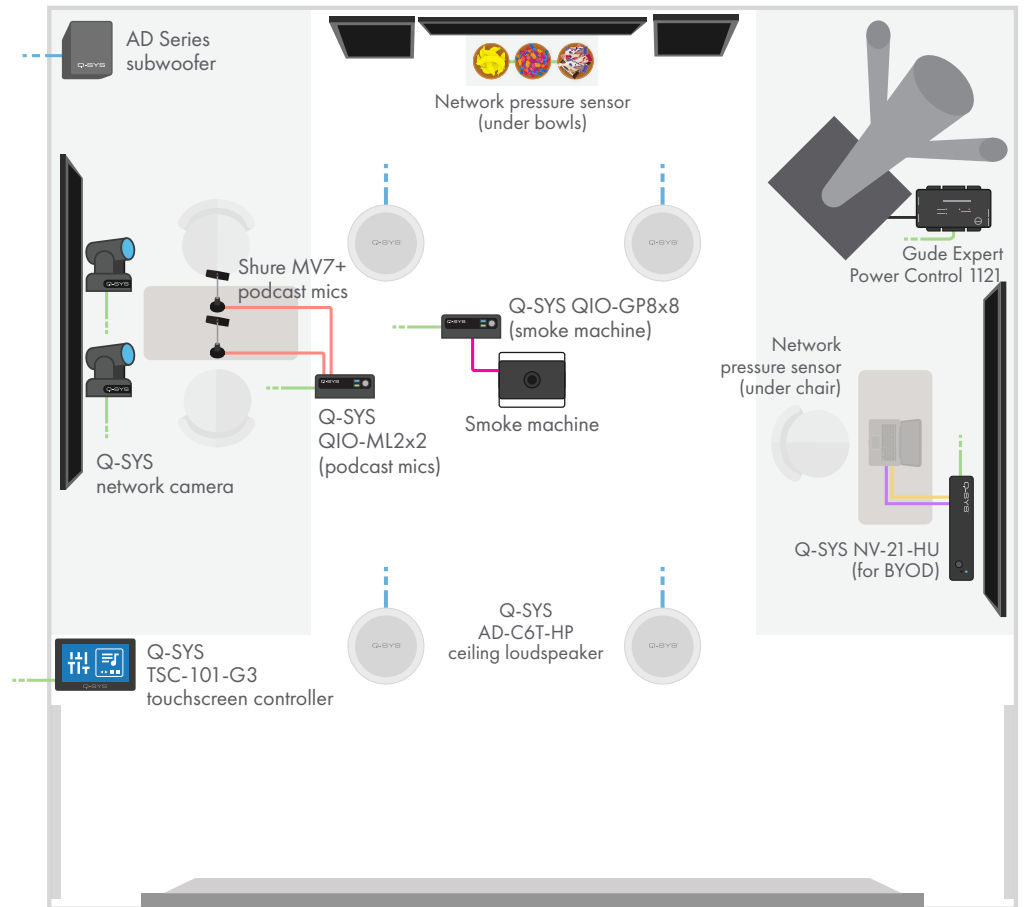
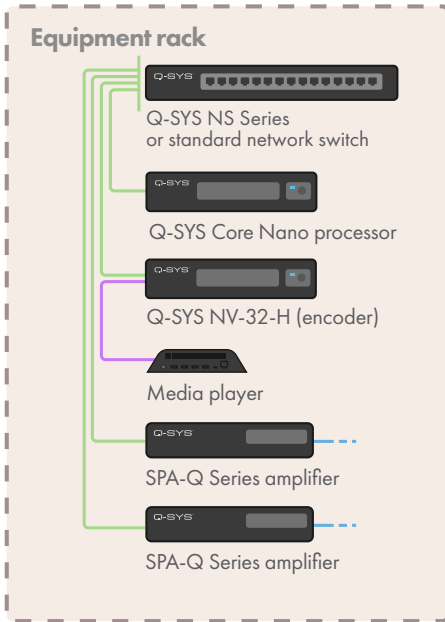
Flexible Spaces: Scalable and flexible spaces are more popular than ever. We demonstrated how to leverage this type of space for adhoc collaboration, complete with single cable connectivity for a laptop and sound masking for open spaces. Thanks to the software-based architecture of Q-SYS, its simple to scale into any size space.

Dance Party: The tour ended with a fun way to leverage the blank canvas that Q-SYS provides to deliver a truly unique experience. Using people counting data from VisionSuite and the robust Q-SYS control engine, you got to join a fully-automated dance party experience: once enough participants stepped into the inclusion zone, the music and videos started, the fog blanketed the floor and would it be a Q-SYS party without a wacky waving inflatable tube person?!

Experience images



Equipment layout



Click on a series to learn more



Q-SYS Core Processors



NC Series PTZ Cameras



AcousticDesign™ Series Installation Loudspeakers



TSC-G3 Series Touch Screen Controllers



QIO Series Network I/O expanders



UC Compute Bundle for Microsoft Teams Rooms



Q-SYS Reflect
cloud monitoring
and management



Q-SYS VisionSuite



NV Series Network Video Endpoints



NL Series Network Loudspeakers



NM Series Network Microphone

Explore Further

[Intro to Q-SYS](#)
[Intro to Q-SYS Control](#)
[Q-SYS Alliances & Technology Partners](#)



Q-SYS Solutions for:

[Collaboration Spaces](#)
[Higher Education](#)
[Hospitality](#)

[Performance Venues](#)
[Retail](#)
[Themed Entertainment](#)